



QuickBack™

Data backup, volume cloning and file / folder archiving utility.
Features automated scheduling, compression, encryption, CD/DVD
burning and can preserve volume backup bootability.

Part of the Intech's SpeedTools™ Software
for MacOS™ X

User's Guide



© 2003 Intech Software Corporation

Document Revision: 2.0

License Agreement

For One Computer

READ THE FOLLOWING SOFTWARE LICENSE AGREEMENT ("LICENSE") CAREFULLY, BEFORE YOU USE THE ACCOMPANYING SOFTWARE. BY INSTALLING OR USING THE SOFTWARE OR ANY OF THE MATERIALS ENCLOSED, YOU ARE AGREEING TO BE BOUND BY THE TERMS OF THIS LICENSE. IF YOU DO NOT WISH TO AGREE TO THE TERMS OF THIS LICENSE, (IF APPLICABLE) PROMPTLY RETURN THE UNUSED SOFTWARE TO THE PLACE WHERE YOU OBTAINED IT FOR A REFUND.

1. License. The software and documentation accompanying this License, known as the SpeedTools™ Utilities (Software), whether on disk, in read-only memory, or contained on any other media and the related documentation are licensed to you by Intech Software Corporation (Intech) and its Licensor(s). You own the disk on which the Software is recorded, but Intech retains title to the Software and related documentation. This license allows you to use the Software on a single computer and make one copy of the Software retained by you for backup purposes only. You may transfer your license rights of the Software and related documentation, the Software backup copy which you may have made, and a copy of this license to another person, provided the other person agrees to accept the terms of this license after reading its complete text and conditions.

2. Restrictions. You may not, in whole or part, copy, photocopy, reproduce, translate, reverse compile, disassemble, reverse engineer, reduce to any electronic or machine-readable form, or otherwise reduce to a human perceivable form (except for a backup copy, as stated in paragraph 1), the Software or related documentation without the prior written consent of Intech. You may not change, rent, lease, loan, distribute or create derivative works based upon the Software in any form, in whole or in part. This prohibition includes transmission of the Software over a network from one computer to another. THIS SOFTWARE IS NOT INTENDED FOR USE IN THE OPERATION OF NUCLEAR FACILITIES, AIRCRAFT NAVIGATION, COMMUNICATION SYSTEMS, OR AIR TRAFFIC CONTROL MACHINES IN WHICH CASE THE FAILURE OF THE SOFTWARE COULD LEAD TO DEATH, PERSONAL INJURY, OR SEVERE PHYSICAL OR ENVIRONMENTAL DAMAGE. Your rights under this License will terminate automatically without notice if you fail to comply with any term(s) of this License.

3. Service or Support. By using the Software and agreeing to this license, you understand and agree that Intech may not offer you any technical support regarding use of the Software or related products. Intech reserves the right to revise the Software and documentation without obligation to notify any person or organization of any such changes or revisions.

4. Warranty Disclaimer. By using the Software and agreeing to this license, you expressly acknowledge and agree that use of the Software is at your sole risk. The Software and related documentation are provided "AS IS" and without warranty of any kind. INTECH EXPRESSLY DISCLAIMS ALL WARRANTIES, EXPRESSED OR IMPLIED, INCLUDING, BUT NOT LIMITED TO, THE IMPLIED WARRANTIES OF MERCHANTABILITY AND FITNESS FOR A PARTICULAR PURPOSE. INTECH DOES NOT WARRANT THAT THE FUNCTIONS CONTAINED IN THE SOFTWARE WILL MEET YOUR REQUIREMENTS, OR THAT THE OPERATION OF THE SOFTWARE WILL BE UNINTERRUPTED OR ERROR-FREE, OR THAT DEFECTS IN THE SOFTWARE OR RELATED DOCUMENTATION WILL BE CORRECTED. NO ORAL OR WRITTEN STATEMENTS OR INFORMATION OR ADVICE PROVIDED BY A INTECH REPRESENTATIVE SHALL ESTABLISH A WARRANTY OR EXPAND THE SCOPE OR TERMS OF THIS WARRANTY. IF THE SOFTWARE IS

DEFECTIVE, YOU WILL BE RESPONSIBLE FOR THE COST OF ALL NECESSARY SERVICING, REPAIRS, OR CORRECTIONS. Some jurisdictions do not allow for exclusion of implied warranties, so the above exclusion may not apply to you. The Software may not work properly with modified versions of your computers operating system, certain resident software applications, or hardware that is not 100% compatible with that provided by the computers manufacturer.

5. Limited Warranty Regarding Media. Intech warrants that the diskette(s) on which the Software are recorded shall be free from defects in materials and workmanship under normal use for a period of ninety (90) days from the date of your purchase of the Software, as established by your receipt. Intech's entire liability, as well as your sole and exclusive remedy, will be replacement of the diskette(s) which are defective. The diskette(s) must be returned to Intech with a copy of your receipt. This warranty does not include diskette(s) damaged by accident, abuse, or misapplication. ANY IMPLIED WARRANTIES ON THE DISKETTE(S) ARE LIMITED TO A PERIOD OF NINETY (90) DAYS FROM THE DATE OF DELIVERY TO YOU. THIS LIMITATION INCLUDES IMPLIED WARRANTIES SUCH AS THE IMPLIED WARRANTIES OF MERCHANTABILITY AND FITNESS FOR A PARTICULAR PURPOSE. This warranty gives you specific legal rights, and you may also have other rights which vary from state to state.

6. Limitation on Liability. IN NO EVENT WILL INTECH BE LIABLE TO YOU FOR DIRECT, INDIRECT, SPECIAL, INCIDENTAL, OR CONSEQUENTIAL DAMAGES ARISING FROM YOUR USE OR INABILITY TO USE THE SOFTWARE OR RELATED DOCUMENTATION, EVEN IF INTECH HAS BEEN ADVISED OF THE POSSIBILITY OF SUCH DAMAGES. INTECH SHALL HAVE NO LIABILITY FOR ANY HARDWARE, SOFTWARE OR DATA STORED OR USED IN CONJUNCTION WITH THE SOFTWARE, INCLUDING THE COSTS OF REPAIRING, REPLACING, OR RECOVERING SUCH HARDWARE, SOFTWARE OR DATA. Under no circumstances shall Intech's total liability to you for all damages, losses, and causes of action (whether in contract, tort (including negligence) or otherwise) exceed the amount paid by you to obtain the Software and related documentation.

7. Severability. Should a court of competent jurisdiction declare this license agreement, or any portion of this license agreement, to be unenforceable, that portion shall be enforced to the maximum extent possible so as to effectuate the intent of the parties, and the remainder of the agreement shall continue in full force and effect.

8. Complete Agreement. This license constitutes the entire agreement among the parties regarding the use of the Software and related documentation. This license agreement replaces and supersedes any prior understandings or agreements, whether oral or written. No contemporaneous understandings or agreements were entered into in conjunction with this license agreement. No change to this licensing agreement will be effective against Intech unless it is in writing and signed by an authorized representative of Intech Software Corporation.

© Copyright 1994-2003 by Intech Software Corporation. All rights reserved worldwide, including those to reproduce, modify and/or distribute this document or part thereof, in any form without prior written consent from Intech Software Corporation.

Apple, the Apple Logo, AppleShare, Finder, MultiFinder, Macintosh, Power Macintosh, MacOS and PowerBook are trademarks or registered trademarks of Apple Computer, Inc. CD-ROM SpeedTools, CD/DVD SpeedTools, Hard Disk SpeedTools, Backup SpeedTools, PeripheralView, Cache Monitor, QwikInstall, Integrity, IntegrityX, QuickBench, QuickBenchX, DrivePC, DeviceTuner, QuickBack and the Intech Logo are trademarks or registered trademarks of Intech Software Corporation. All other brand and product names contained in the software and related documentation were used in an editorial fashion only and are the trademarks or registered trademarks of their respective holders.

Table of Contents

- 1 . Guide Introduction 1**
 - About this Guide 1
 - Conventions Used in this Guide 1
 - User Registration 1
 - Technical Information 1

- 2 . Using the QuickBack Utility 2**
 - About QuickBack 2
 - Using QuickBack 2
 - VolumeBackup Options 3
 - Make Destination Bootable 3
 - Erase Destination 3
 - Auto Replace 4
 - How to Make a Volume Backup 4
 - How to Make a Files/Folders Backup 4
 - Backing Up to QuickBack Archive Files 4
 - How to Schedule an Automated Backup 5
 - Managing QuickBack Schedules 7
 - Viewing the Log 8
 - QuickBack Preferences 8
 - QuickBack System Requirements 8



Guide Introduction

About This Guide

The instructions and explanations in this guide assume that you understand how to operate your Macintosh computer. You should, for example, know how to choose, select, launch, and drag by using your mouse. In addition, you should also understand how the desktop, windows, dialog boxes, buttons and file/folders work within the Macintosh environment. For more information about these items, please refer to your Macintosh User's Guide.

Conventions Used In This Guide



Note: This symbol calls your attention to important information about the adjacent text. A note will always appear in standard print.



Warning: This symbol calls your attention to procedures in the adjacent text which can cause harm to you, your data or computer system. A warning will always appear in bold print.

User Registration

Please take a moment to register your copy of the SpeedTools™ software on-line via the Intech Software World Wide Web page at <http://www.SpeedTools.com>.

Technical Information

If you received this software with the purchase of a drive subsystem and you require technical support, Intech has made special arrangements with your drive manufacturer to support this software directly via their technical support department. For customers who have purchased this software product as stand-alone, Intech provides technical information and other late-breaking information via its web site at <http://www.SpeedTools.com>.

2

Using the QuickBack™ Utility

About QuickBack

When Intech set out to design our own backup software, our quest was clear: to do everything possible to create the the easiest backup software ever developed for the Macintosh without sacrificing many of the features found exclusively with high-end backup software packages. Mission accomplished! Presenting QuickBack for MacOS X.

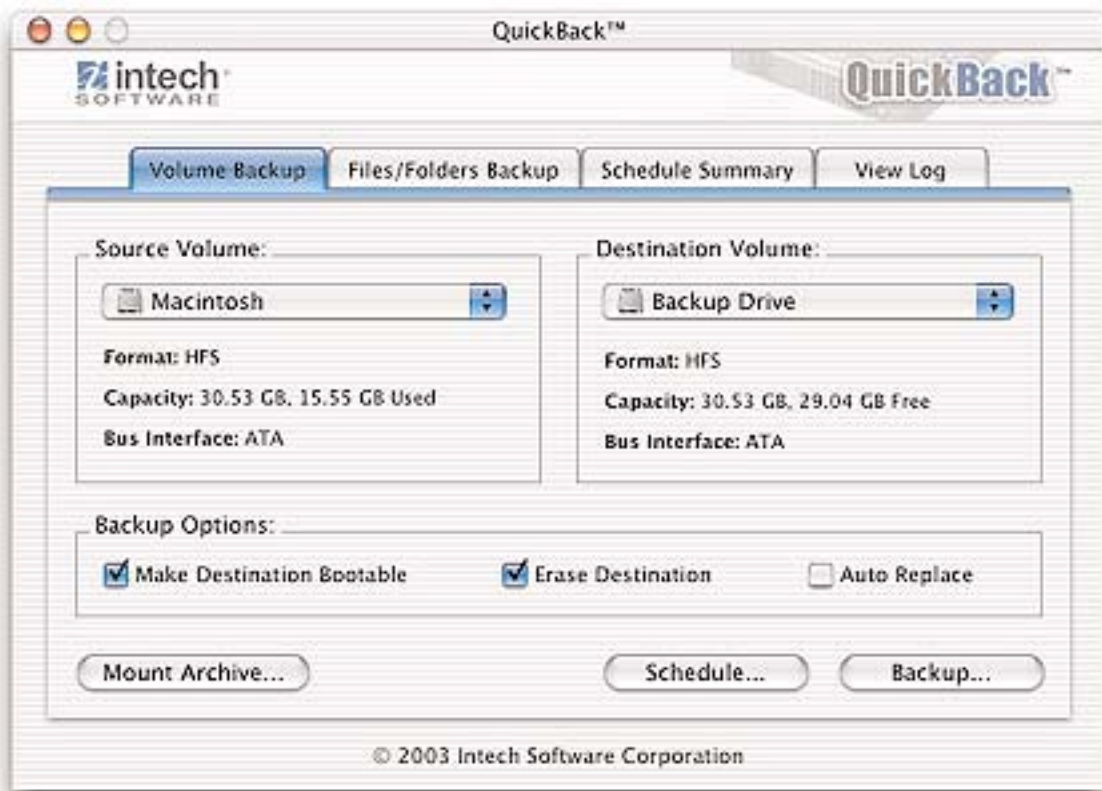


Figure 1. The QuickBack Main Window

Using QuickBack

QuickBack can be used in two different ways. First, it can be used to make a copy of a single volume or groups of files and folders on a one-at-a-time basis. Additionally, QuickBack can be used to create and set schedules for multiple numbers of automated backups.

All functions of QuickBack are accessed via four tab panes on the main window as shown in Figure 1. The first tab, "Volume Backup," controls the configuration and execution options for making copies of drive volumes. This tab controls which volumes are selected for the backup and what the options for the backup will be.

The second tab, "Files/Folders Backup", allows you to drag and drop any number of files and folders from any mounted drive to create a backup source item set.

Both Volume backups and File/Folder backups provide access to scheduling an automated version of the currently configured backup as well as copy them to either another location or a QuickBack Archive file. Additionally, the File/Folder backup function allows backing up to a recordable CD/DVD.

Once created, automated backup schedules are managed via the tab pane entitled "Schedule Summary". The last tab, "View Log" is designed to keep track of the results from backups that are executed automatically.

Volume Backup Options

QuickBack provides three configurable options which are presented as check boxes on the Volume Backup tab pane:

Make Destination Bootable: This option is only required when the source drive contains a bootable version of MacOS X and you wish to make the duplicate drive bootable as well.



Note: The "Make Destination Bootable" option cannot make a destination drive bootable if the source drive is not already bootable. Additionally, some older FireWire and USB devices are not bootable because of limitations in their firmware and some older Macintoshes cannot boot from FireWire and USB devices as well. As a result, QuickBack can not make such devices bootable.

Erase Destination: Removes all the files on the destination volume prior to performing the copy process.

Auto Replace: If a file with the same name in the same location already exists in the destination, it will be overwritten by the source file.

How to Make a Volume Backup

To make a one-time-only volume backup, click the "Volume Backup" tab located near the top of QuickBack's main window. Next, select the source volume from the popup menu on the left side of the window and the destination volume from the popup menu on the right. Alternatively, volumes can be drag and dropped to the source and destination areas. Select the backup options you want (see "Volume Backup Options" earlier in the section), click the "Backup" button and the backup process will begin.

How to Make a Files/Folders Backup

To make a one-time-only backup of a group of files and folders, select the "Files/Folders Backup" tab. From the Finder, first locate, then drag and drop as many files and folders as you like into the list box on the left side of the window. Alternatively, click on the "+" button under the list box to select backup items using a navigational window. To de-select an unwanted backup item, click on it in the list and click the "-" button or hit the "delete" key on your keyboard. Next, select one of the backup destination options from the popup menu on the right side of the window. Lastly, click the "Backup" button and the backup process will begin.

Backing Up to QuickBack Archive Files

QuickBack Archive files are 100% compatible with MacOS X's Disk Image Format (.dmg files). As a result, QuickBack Archive files can be accessed and/or modified on any computer running MacOS X even without an installation of QuickBack available. If you elect to backup to a QuickBack Archive file, an additional option window will be presented as shown in Figure 2.

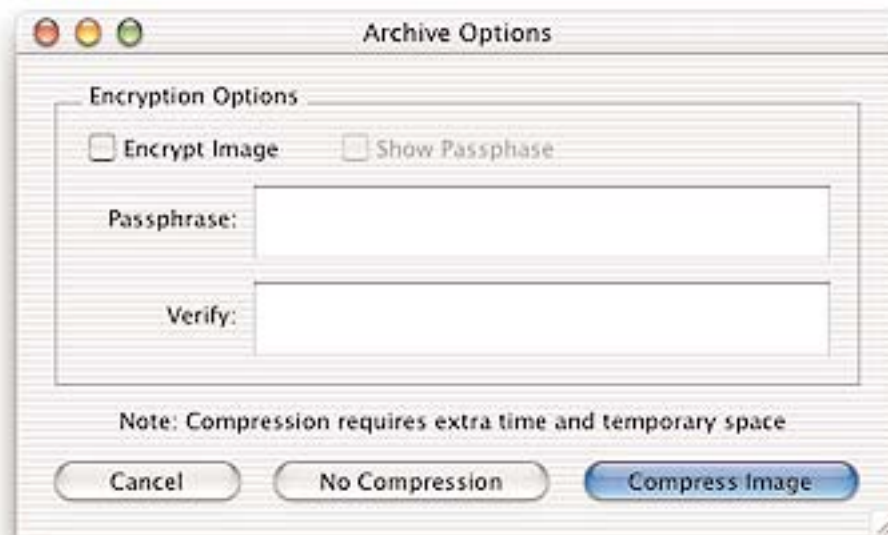


Figure 2. The QuickBack Archive Options Window

The archive file can be encrypted using a 128-bit encoding algorithm by selecting the "Encrypt Image" check box. To see the actual characters of your passphrase as you type it, select the "Show Passphrase" check box. The last option for an archive file is to compress the archive file after the backup has completed.



Note: QuickBack will default to creating archive images 50 MegaBytes larger than the size of the files and folders to be backed up (i.e. 50 MB of "Pad" space). This will allow this image to hold more backup data for future modifications without the need to delete and recreate the entire backup file for every backup. This value can be changed in the "Preferences" window available from the "QuickBack" menu. See "QuickBack Preferences" later in this guide for a full description of preference options.

How to Schedule an Automated Backup

Scheduling Automated backups is done through the "Schedule Backup" button near the bottom of the "Volume Backup" and "Files/Folders Backup" tab panes. Before a backup schedule can be created, the source and destination selections and any "Backup Options" must be chosen just like when creating a one-time-only backup. You can create as many backup schedules for as many backups as you like.

Once you have selected a source/destination combination and any desired options, click the "Schedule Backup" button. This will bring up the scheduling window as shown below.

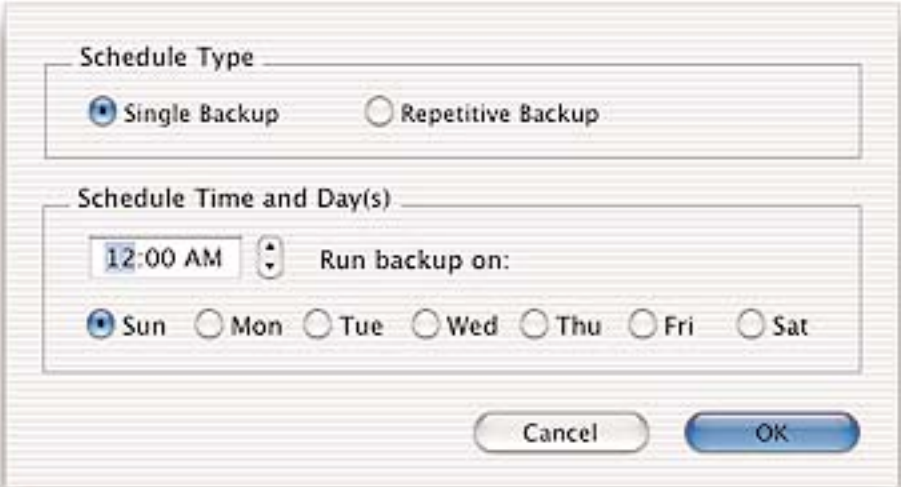


Figure 3. The QuickBack Scheduling Window

To create a one-time-only scheduled backup to run at some time in the next seven days, leave the "Single Backup" radio button checked. Next, set the time and day you would like the backup to run, and click the "OK" button. After the backup runs, the backup schedule will remain available in the list of backups shown in the "View Schedule" list, but will be set to not run again (i.e. turned "off" in the "View Schedule" tab pane). After a scheduled backup has been turned off like this, you can reschedule the item to run again as often as you like without the need to create new source and destination settings. To do this, click on the scheduled item in the list on the "Schedule Summary" tab pane and then click the "Edit Times..." button as show in Figure 4.

To create a scheduled backup which recurs continually, click the "Repetitive Backup" radio button. Next, choose the time of day and at least one day of the week the backup will run. Click "OK" and this backup schedule will be added to the list of backups scheduled for execution. After the backup runs, the backup schedule will remain available in the list of backups shown in the "View Schedule" list, and will be set to run again (i.e. turned "on" in the "View Schedule" tab pane).

When you are finished creating or modifying any backup schedule(s), quit QuickBack. All scheduled backups will be performed automatically. The only requirement for a scheduled backup is that the computer must be powered on and the source/destination drives be available at the time and date a backup is scheduled.

Managing QuickBack Schedules

QuickBack schedules are managed from the "Schedule Summary" tab pane. A simple example to illustrate schedule management is provided in the illustration below.



Figure 4. The QuickBack Schedule Summary Tab Pane

In this example, there is a single ongoing backup scheduled to run every night at midnight. Note in the "Backup Details" section that the destination drive has been set to be made bootable as an option. From this window, backup schedules can be activated/deactivated by clicking the check box in the "On" column, and toggled between repetitive and non-repetitive types by clicking the "Rep" check box.

To further modify a backup, select it by clicking on it. This will activate the "Remove" and "Edit Times" button. The times and days of a particular backup can then be modified by clicking the "Edit Times" button, or deleted altogether by clicking the "Remove" button.

Viewing the Log

QuickBack's logging feature is provided to easily view the results of scheduled backups which have taken place. To view this information, simply click the "View Log" tab. From this tab, historic log data can be viewed, printed or deleted.

QuickBack Preferences

The QuickBack Preferences window is available from the "QuickBack" application menu for changing some of the default behavior of QuickBack.

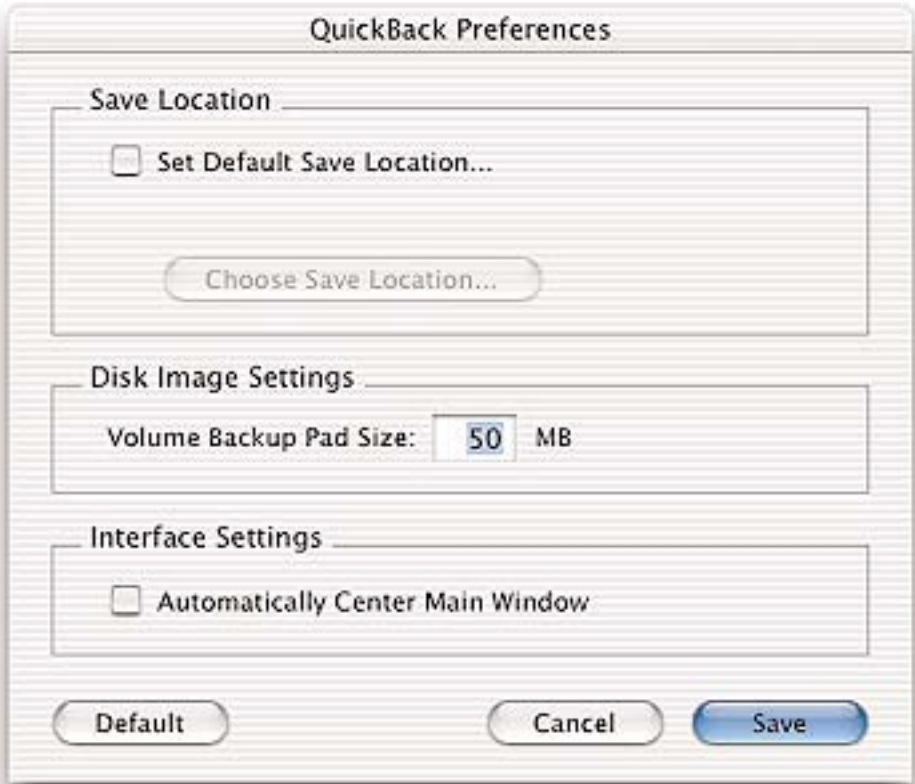


Figure 5. The QuickBack Preferences Window

To automatically have QuickBack archive files and files/folders defaulted to a specific destination location, select the "Set Default Save Location" check box and click the "Choose Save Location..." button.

To change the amount of extra "Pad" space allocated in new QuickBack archive files, type a new value in the "Volume Backup Pad Size" text field of the "Disk Image Settings" group box.

Lastly, if you would like QuickBack to always show up in the center of your main screen each time the application is launched, select the "Automatically Center Main Window" check box. Otherwise, QuickBack will remember the last location on your screen and position the main window in that place.

QuickBack System Requirements

- MacOS X 10.2 or later
- A destination volume which is large enough to contain the data from the selected source given the selected backup type and options.